



Canada Agriculture and Food Museum

What am I?

Name:

Date:

When we examine various fibres under a microscope, we can see that they look different. Read the clues and look carefully at the pictures below to solve these riddles.



1. I grow on a sheep's skin, which has to be sheared every year.

My surface scales repel water but my core absorbs water.

The scales make me scratchy to touch.

I am _____.

2. I'm made from a type of plastic that is often produced from recycled bottles.

Once melted, the plastic comes out of tiny holes in a machine, like long, thin strands of spaghetti.

I retain water on my surface, but I cannot absorb water.

I am _____.

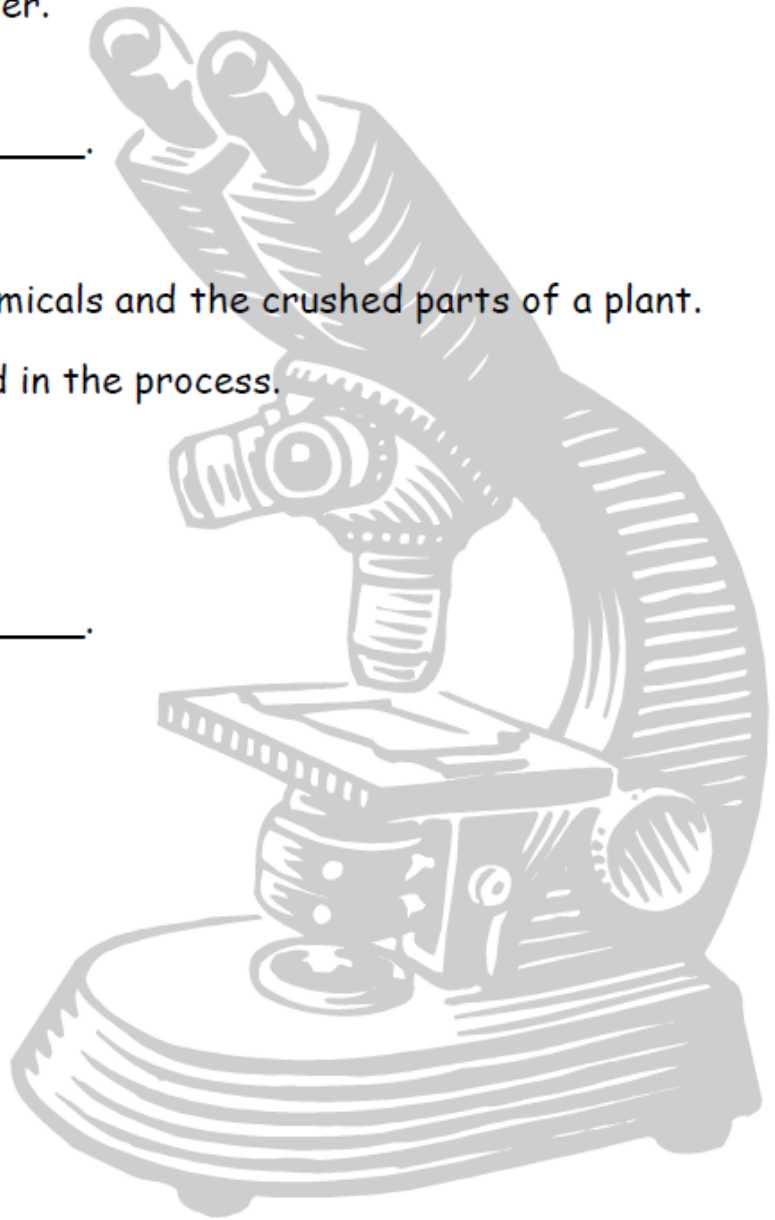


3. I grow in long, thin wavy tubes on the surface of a plant's seeds.
When the plant dies, these tubes become empty, flat cavities. That's
where I can store a lot of water.

I am _____.

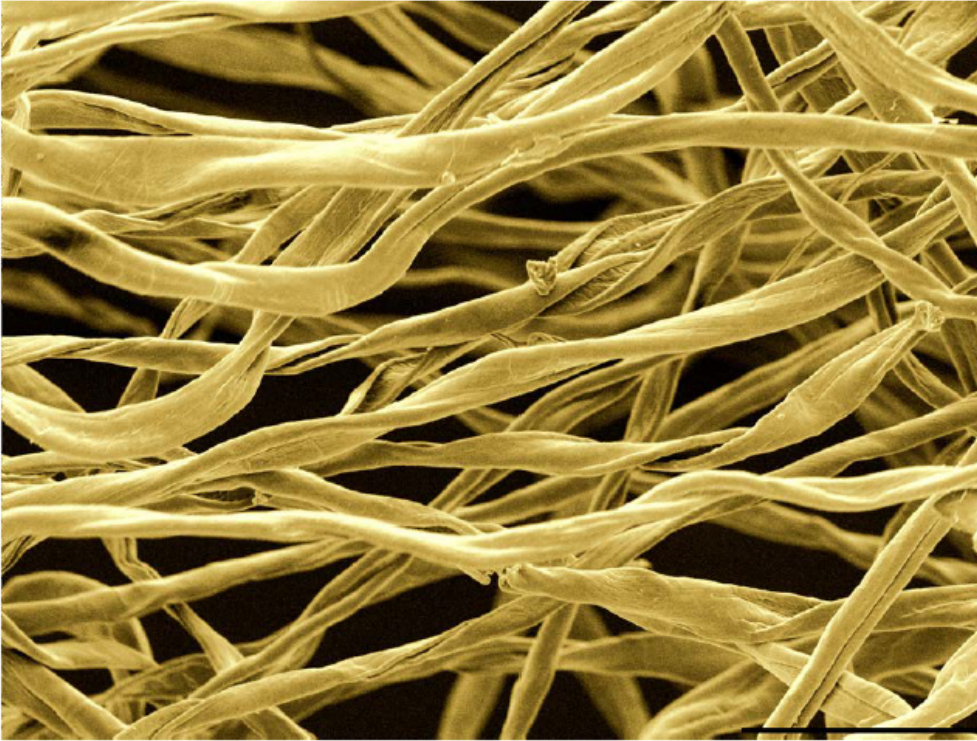
4. I'm made by humans from chemicals and the crushed parts of a plant.
Many tiny fibres are combined in the process.
I can absorb lots of water.

I am _____.

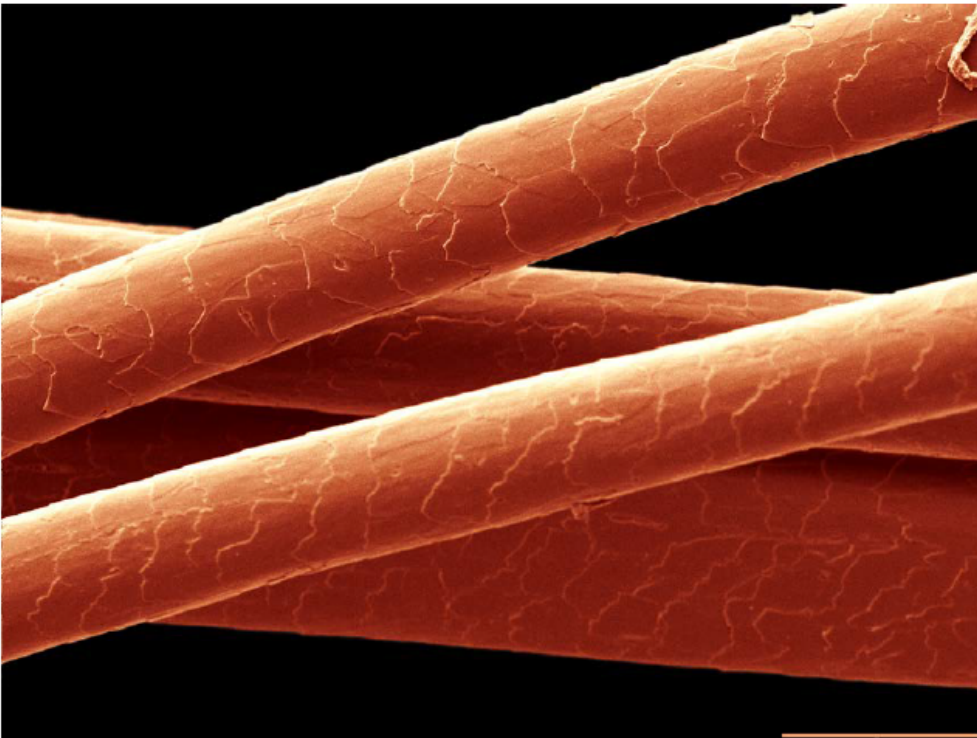




COTTON

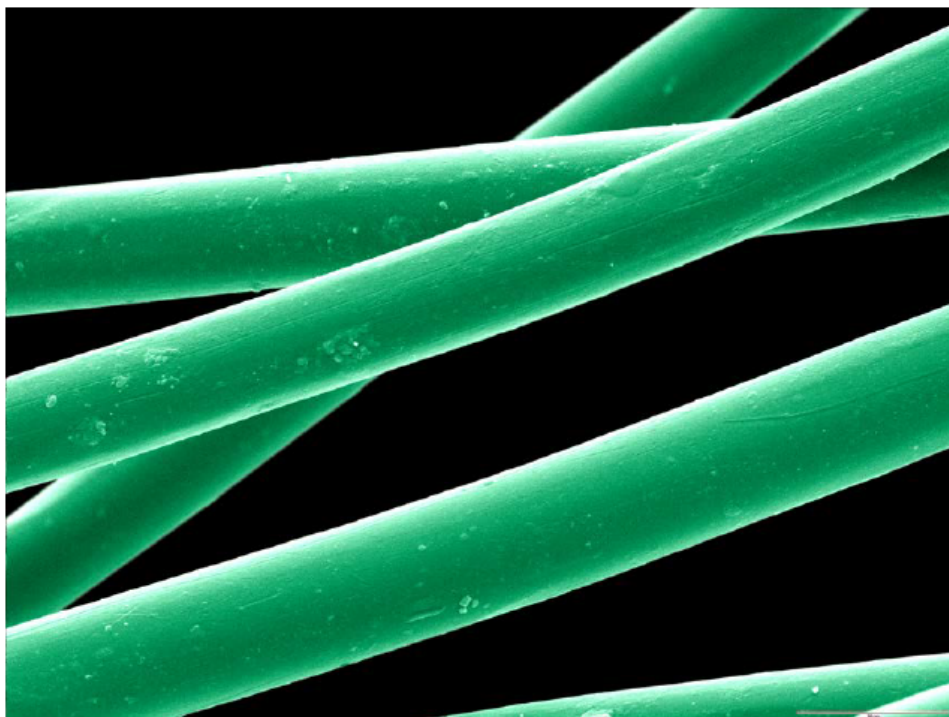


WOOL

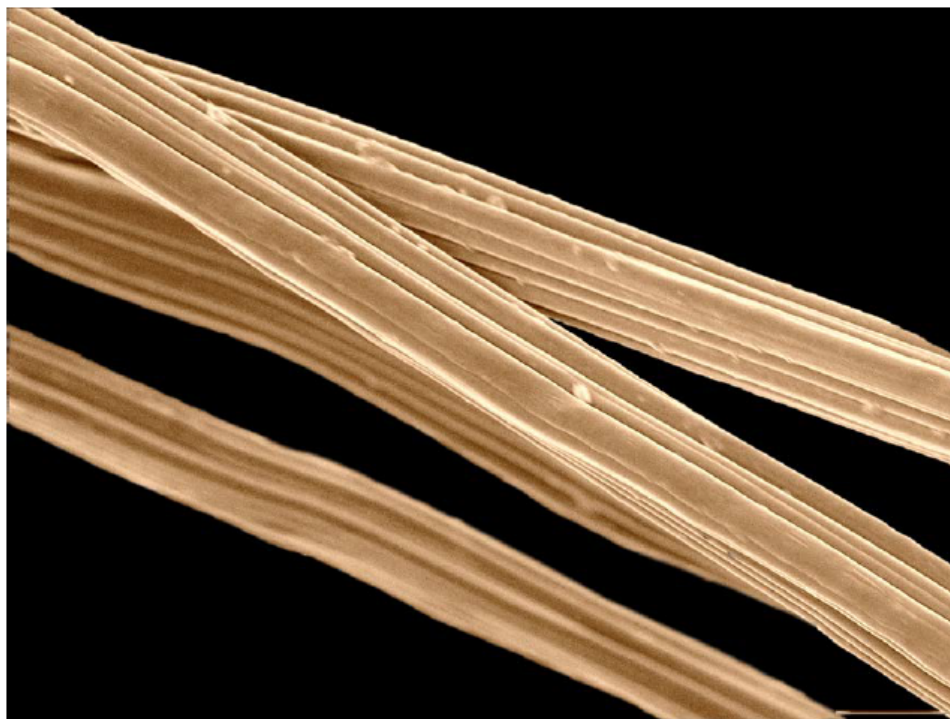




POLYESTER



BAMBOO



This lesson plan was produced by the Canada Agriculture and Food Museum.

[View all of Ingenium's learning resources on our website.](#)