

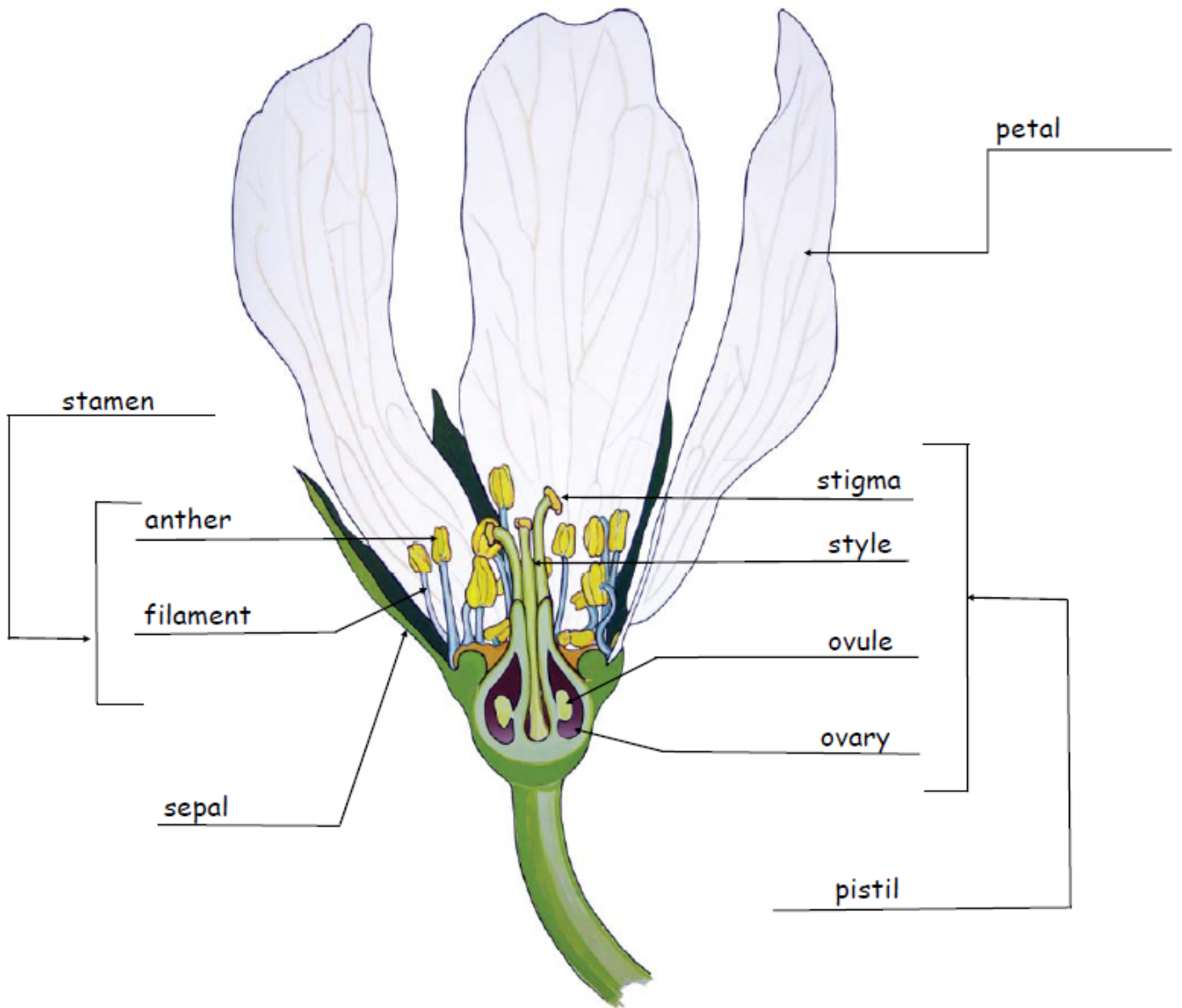


Canada Agriculture and Food Museum

Parts of a flower (Answers)

Science and technology for teachers

Use the words at the bottom of the page to name the different parts of a flower, then answer the questions on flowers and pollination.



pistil
ovary

anther
stigma

petal
sepal

stamen
filament

style
ovule



The pollen seed and the flower are compatible.

The pollen sprouts.

The pollen tube grows down the style to ovary and releases the male seeds.

The ovule is fertilized.

It turns into a seed.

1. What is the name of the flower's male organ? It includes the anther and the filament.

Stamen

2. What is the name of the flower's female organ? It includes the stigma, the style, the ovary, and the ovule.

Pistil

3. Where in the flower are grains of pollen formed?

Anthers

4. What is pollination?

Transfer of pollen from the stamen to the pistil

5. What happens to the ovule after it is fertilized?

It turns into a seed

This lesson plan was produced by the Canada Agriculture and Food Museum.

[View all of Ingenium's learning resources on our website.](#)